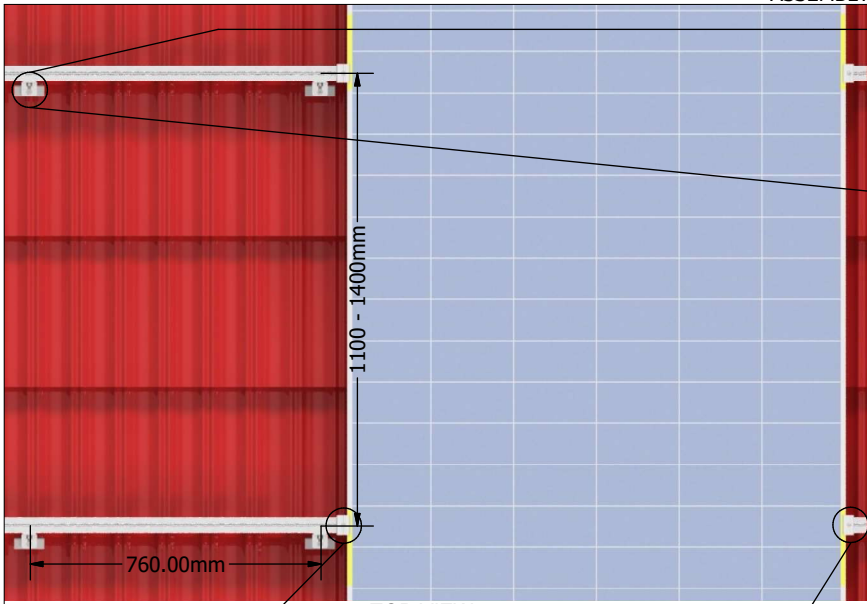


ASSEMBLY DETAILS FOR HARVEY TILE ROOF SOLUTION

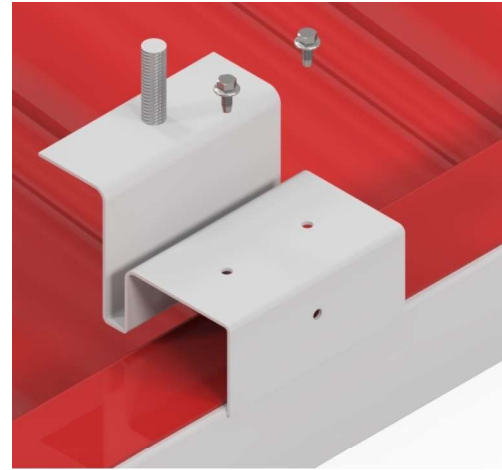


TOP VIEW

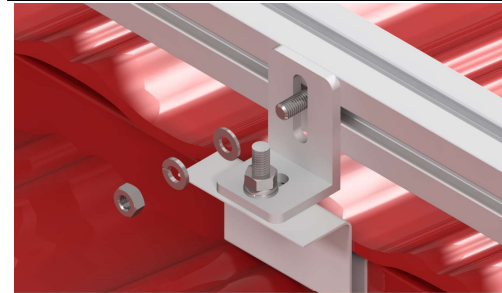
FRONT VIEW

SIDE VIEW

1. HARVEY TILE BRACKET ASSEMBLY

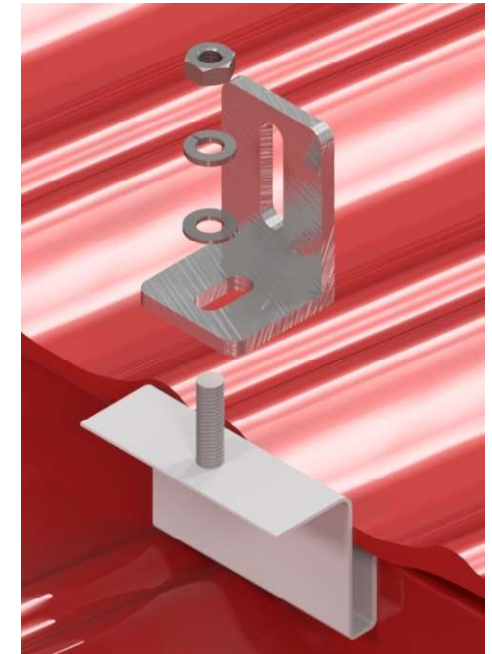


3. TOP & SIDE RAIL CONNECTION TO L STANDARD



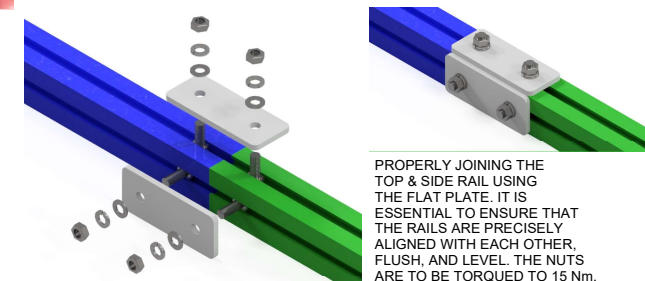
THE L STANDARD NUT IS TO BE TORQUED TO 15Nm TO THE TOP & SIDE RAIL. NOTE THAT A M8 SPRING WASHER AND M8 WASHER IS USED.

2. HARVEY TILE BRACKET AND L STANDARD ASSEMBLY.



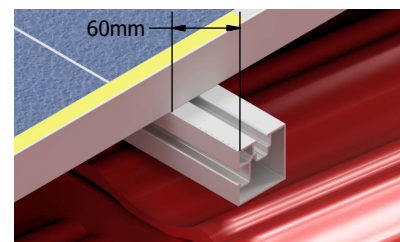
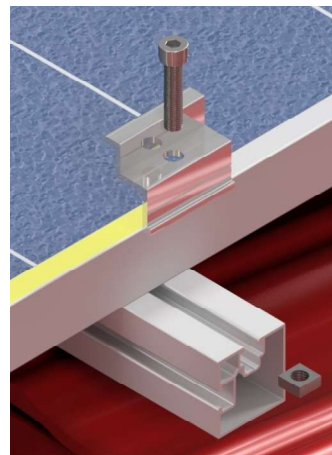
THE L STANDARD NUT IS TO BE TORQUED TO 15Nm TO THE HARVEY TILE BRACKET. NOTE THAT A M8 SPRING WASHER AND M8 WASHER IS USED.

4. TOP & SIDE RAIL



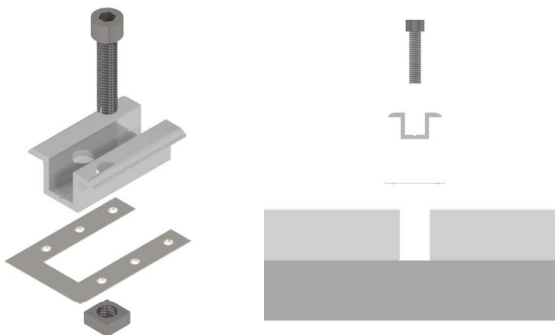
PROPERLY JOINING THE TOP & SIDE RAIL USING THE FLAT PLATE. IT IS ESSENTIAL TO ENSURE THAT THE RAILS ARE PRECISELY ALIGNED WITH EACH OTHER, FLUSH, AND LEVEL. THE NUTS ARE TO BE TORQUED TO 15 Nm. NOTE: M8 SPRING WASHER AND M8 WASHER IS USED.

5. END CLAMP ASSEMBLY



MAINTAIN DISTANCE OF 60mm BETWEEN THE EDGE OF THE RAIL AND THE SOLAR PANEL. THIS GUIDELINE IS NECESSARY TO ENSURE THAT THERE IS ENOUGH SPACE FOR THE END CLAMP TO BOLT TO THE TOP & SIDE RAIL. POSITION THE END CLAMP CORRECTLY WITH THE CLAMPING ZONES AND TORQUE THE END CLAMP BOLT TO 15 Nm.

6. MID CLAMP ASSEMBLY



ENSURE THAT THE MID CLAMP IS SECURELY FASTENED IN THE CORRECT CLAMPING ZONES. THE MID CLAMP BOLT SHOULD BE TORQUED TO 15 Nm.

NO PART PANEL ON ROOF OVER HANG AREA.

TAKE NOTE: IF ANY OTHER CONFIGURATION IS REQUIRED DUE TO SITE CONDITIONS PLEASE CONTACT VALSA.

www.Valsa.co.za

