



PV SOLAR CARPORT MOUNTING STRUCTURE SOLUTION NON-STANDARD ALUMINIUM APPLICATION

The Valsa Solar Carport has a dual purpose in that it combines the harvesting of photovoltaic power with the need for shade and protection for staff and visitor vehicles. It can also incorporate LED lighting and solar charge stations for electrical cars.

The Non-Standard mounting solution is designed and manufactured for each specific site and maximises the performance of the panels while utilizing the existing space available i.e. carports or roofing.

The structure has been designed and manufactured to SABS standards and is in line with SANS regulations. The carport mounting structure solution is ideally suited for constant exposure to the harsh African weather conditions.

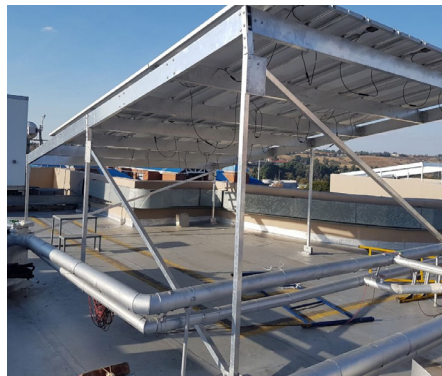
CHARACTERISTICS

Versatility	<ul style="list-style-type: none"> • Design utilises available space and works around obstacles in a flexible configuration • Flexible design for improved PV solar performance • Utilises parking space for power harvesting
Design	<ul style="list-style-type: none"> • The design uses standard components for the non-standard application for an easy installation
Flexible	<ul style="list-style-type: none"> • Installation on site (uses standard aluminium components for non-standard application) • The Aluminium solution is easy to work with compared to steel • Modular design for quick and easy installation with no welding or cutting required on site • Lightweight aluminium top structure and galvanised sub structure • Can accommodate any available space for panel installation
Cost Effective	<ul style="list-style-type: none"> • Cost-effective PV solar carport solution utilising space with obstructions
Installations	<ul style="list-style-type: none"> • Standard Aluminium components are used with Stainless Steel bolts and nuts
Project design	<ul style="list-style-type: none"> • Meets structural engineering requirements
Long life span	<ul style="list-style-type: none"> • Long life span and incorporates long live PV solar panels
Maintenance	<ul style="list-style-type: none"> • Minimum maintenance is required

SPECIFICATIONS

Material	<ul style="list-style-type: none"> • Aluminium • Stainless Steel fixing component
Roof tilt	<ul style="list-style-type: none"> • Additional tilt for better performance
Components	<ul style="list-style-type: none"> • Aluminium and Stainless Steel fixing components
Additional Components	<ul style="list-style-type: none"> • Water proofing rubbers can be fitted
Certification	<ul style="list-style-type: none"> • Meets SABS standards and is in line with SANS regulations
Warranty	<ul style="list-style-type: none"> • 10 years

PV Solar Carport Mounting Structure Solution - Galvanised Steel



Valsa South Africa
 Laser Park, Erf. 115 Battleship Road,
 Cnr Boat Turn Road, Honeydew,
 Gauteng, 1724, South Africa
 Tel +27 (0) 11 794 1306 |
 +27 (0) 61 288 2572 | +27 (0) 84 235 5282
 E-mail info@valsa.co.za
 www.valsa.co.za

Valsa Kenya
 Casa Moko Plaza, North Airport Road,
 Eastern Bypass, Nairobi
 Tel +254 724 919 571
 E-mail info@valsa.co.ke
 www.valsa.co.ke

Valsa Zimbabwe
 22 Kent Road, Chisipite,
 Harare, Zimbabwe
 Tel 00263772283889 | 0771539301
 E-mail george@valsa.co.zw
 www.valsa.co.zw